

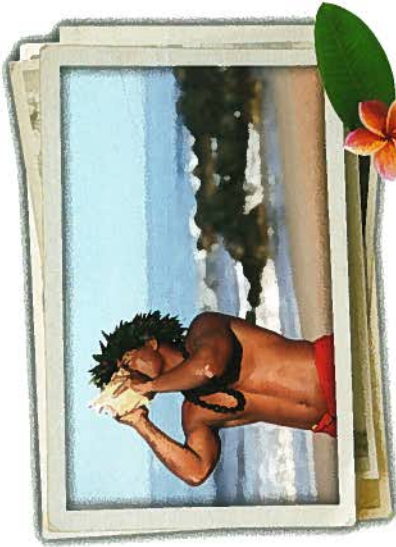
Property Map & Information Guide



AUTHENTICALLY LOCAL EXPERIENCES

More often, travelers are seeking an experience that provides a deeper connection to the place they are visiting. Hawai'i, with its unique customs, history, language and cuisine, offers a rich cultural experience unlike any other.

The Fairmont Kea Lani, Maui was voted as having the "Best Hawaiian Cultural Program" on Maui by the readers of *Maui News*. The detailed program, led by our full-time Cultural Coach Jonelle Kamai, offers authentic Hawaiian experiences that range from local cuisine, to educational classes, to cultural music and celebrations. As part of our commitment to preserving and perpetuating the Hawaiian culture, all cultural experiences and activities are, and always will be, complimentary to hotel guests.

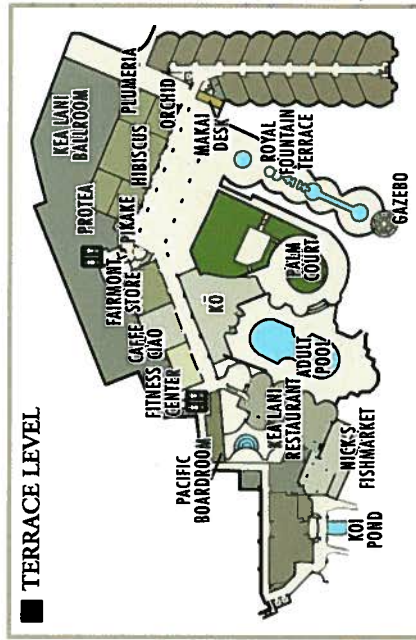
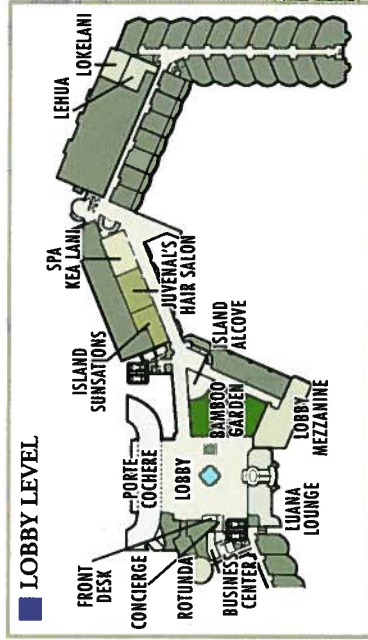


Ask the concierge about cultural experiences during your stay.

ALOHA & WELCOME

In the Hawaiian language, the word aloha can be translated to affection, love, peace, compassion and mercy. The spirit of aloha is embodied throughout the Hawaiian Islands and is considered one of the Hawaiian culture's core values.

It is our sincere pleasure to welcome you with aloha to The Fairmont Kea Lani, Maui.



UNRIVALED PRESENCE

A large white building with open air spaces, sweeping archways, and spiraling towers. At first glance, many don't believe The Fairmont Kea Lani, Maui's unique architecture belongs in Hawai'i. However, the building, which was designed by architect Jose Luis Ezquerro, draws Hawaiian influences such as neoclassical themes and eccentric decorative elements from the era of King David Kalākaua, who died almost exactly 100 years before the hotel opened. When designing the building, Ezquerro found inspiration in two Hawaiian landmarks of the era, the Royal Hawaiian Hotel and 'Iolani Palace, both located on the island of O'ahu.

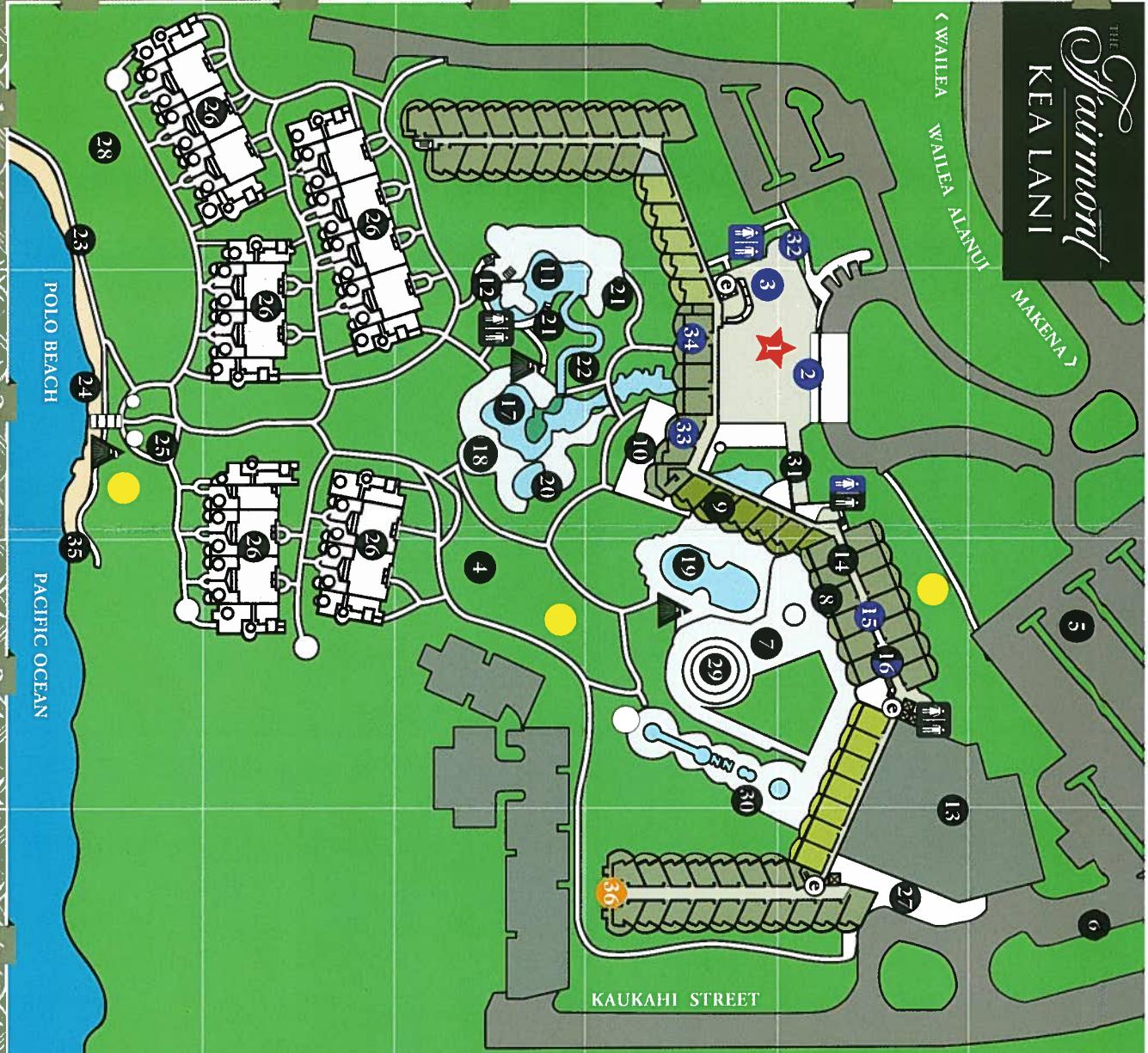


Royal Hawaiian Hotel

The visual presence of The Fairmont Kea Lani's bright white exterior, against the deep blue ocean of Maui's southern shoreline is unrivaled.

THE Fairmont KEA LANI

WAILAIA ALANUI
MAKENA



- Lobby Level
- Terrace Level
- Elevators
- Showers

- Lobby (B2)
- Porte Cochere (B2)
- Concierge (C2)
- Pashu Terrace (D3)
- Guest Parking (A3)
- Electric Car Chargers (A4)
- Ko Restaurant & Bar (C3)
- Caffè Ciao Bakery & Deli (B3)
- Kea Lani Restaurant (C2)
- Nick's Fishmarket Mani (C2)
- Upper Pool & Waterslide (D2)
- Polo Beach Grille & Bar (D2)
- Ballroom (B4)
- Kea Lani Fitness Center (B3)
- Spa Kea Lani (B3)
- Retail (B3)
- Lower Lagoon Pool (D2)
- Pool Activities & Towels (D2)
- Adult Pool (C3)
- Kalia Pool (D2)
- Whirlpools (D2-C2)
- Water Slide (D2)
- Beach Walk / Jogging Trail (F1)
- Suits to Polo Beach (F2)
- Beach Activities & Towels (F2)
- Villas (E1-E3)
- Mahai Entrance & Group Activity Entrance (B4)
- Polo Beach Lawn (F1)
- Palm Court (C3)
- Royal Fountain Terrace (C3)
- Pacific Boardroom (B2)
- Rounda (B1)
- Lobby Mezzanine (C2)
- Luana Lounge (C2)
- Pacific Terrace (F3)
- Kea Lani (Kid's Club) (C4)
- Designated Smoking Area (F2-D3-B3)

WATER SAFETY

While enjoying the beach and water features of the resort, please be mindful of the potential hazards. We ask that you observe and obey all rules and regulations at our pools, whirlpools and water slide, as well as familiarize yourself with the warning flags and signs along the beach.

Warning Flags for Ocean Conditions:

- RED - A red flag indicates high surf, strong currents, and/or dangerous shorebreaks.
- YELLOW - A yellow flag signals jellyfish, man-o-war, or sea urchins are very prevalent.

In the event you do not see any warning, please contact a beach or pool attendant to confirm water conditions. Please note, there are no lifeguards on duty at anytime.